

**Honeywell**



**Optiflex Interactive  
Video System**





Before You Start . . . . .	2
On-site Video Surveillance . . . . .	6
Touchscreen Interface Viewing . . .10	
Secure Remote Look-in . . . . .	16
Optiflex Mobile . . . . .	18
Video Capture and Archiving . . . .22	

## 2 Optiflex Interactive Video System



### **Honeywell's Optiflex Interactive Video System**

provides secure, cost-effective video solutions for residential and commercial applications. Installation is worry free and does not compromise network security or require manipulation of firewalls. The state-of-the-art video controller lets you view cameras via a video monitor, integrated television or secure remote viewing from a computer anywhere over the Internet.

## Before You Start



**Optiflex is so versatile that you can connect remotely to your system from anywhere in the world. All you need is Internet access!**

Ready to begin? The first thing you'll need to do is contact your Monitoring Center and request that you be setup for Honeywell Remote services. If your central station does not support the remote services, call us for assistance.

Note: To set up the account the central station will require the unique device ID located on the unit.

## The Hardware Setup

1. Internet Connection
2. Cat5e Cable
3. Power

Once you have established your Honeywell Remote Services Account, place the unit in the desired location, plug in the Internet Connection and your 12DCV transformer.

Connect your Optiflex cameras or any camera you wish with the optional opticoax accessories.

Optiflex will then establish its Internet connection and be ready for use.



## 4 Optiflex Interactive Video System





This application guide is designed as a reference to explain some of the many uses of this versatile video solution.

- On-Site Video Surveillance
- Integrated VISTA/Optiflex local viewing from Touchscreen Interface
- Secure Remote Look-in
- Optiflex Mobile
- Video Capture and Archiving



### On-Site Video Surveillance

Thanks to Optiflex Direct, you can conveniently view video around your home or business on any computer without having to rely on the Internet. The PC-based application allows for local connection to an Optiflex Video device for viewing.

Optiflex supports local viewing applications with a variety of solutions. An NTSC/PAL output may be used to connect to a monitor or television. In addition, Optiflex Direct software may be downloaded free of charge to support local PC viewing.



## On-Site Viewing Setup

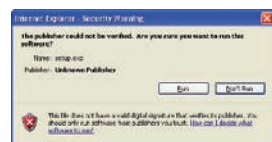
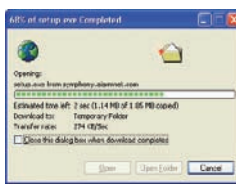
Before installing the Optiflex Direct software, it is strongly recommended that you ensure that the latest operating system service packs, patches and critical updates be installed.

Go to the Optiflex Website:

<http://symphony.alarmnet.com/Video/OptiflexDirect.aspx>



To download the latest version of the Optiflex Direct setup file, click the link located to the right. After clicking that link, you will be prompted to either open the file or save the file. If you select "Open," the setup file will execute immediately after the file is downloaded. If you select "Save," take note of the location the file is placed, so that you may then execute that file manually.

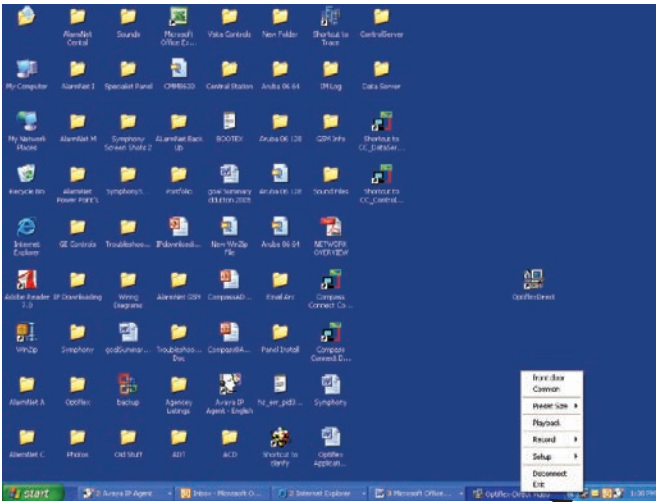


## 8 Optiflex Interactive Video System



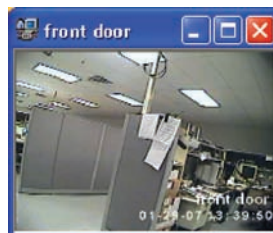
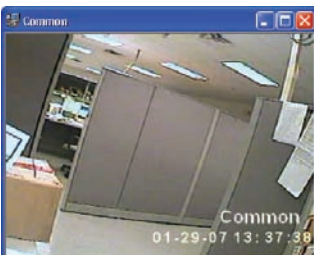
Once the setup program is running, follow the on-screen instructions to proceed with the installation procedure.

Note: This software requires a prior installation of DirectX software, version 8.0 or later. The installation will detect if DirectX is installed and automatically download and install the latest DirectX version, if it is not present. Following the DirectX installation, your machine will be rebooted and the Optiflex Direct installation will continue.



Once the software has been loaded on your Desk top you will find the Optiflex Direct Icon. To Start the Viewer, double click on the Short Cut. Once activated, an Icon will appear in the Start up Tray.

Once activated, left mouse "Click," Scroll up to the Selected Camera and click on it. Your Viewer will open a video display box on your Desktop.





### Touchscreen Interface Viewing

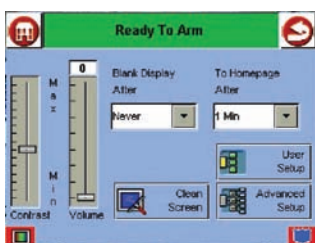
When Optiflex is combined with Honeywell's VISTA Control Panel and Touchscreen Interface (8132i) you can control security, view video and operate lights and relays remotely from any Web browser. Symphony can also provide you with vital details about your business or residence, letting you view opening and closing reports via an event log with the touch of a button.

## Touchscreen Interface Viewing Setup

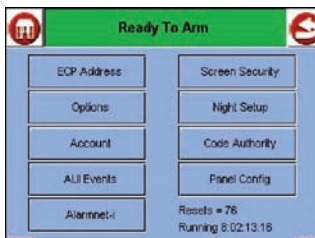
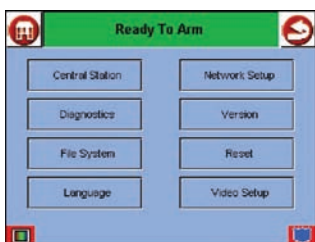
For direct viewing over the touchscreen keypad, first make sure that both are connected to the same Network router.



To configure the Symphony touch screen for Optiflex viewing Press, the “Tool bar” tab and then “Advanced Setup” tab. You will be asked for your Installer Code.



Press the **Central Station** button. The “Central Station” menu screen is displayed. Press the **Options** button on the “Central Station” screen. A pop-up window is displayed with options for selecting **Lighting**, **Heating/Cooling**, and **Video**. Click on the button corresponding to **Video**. A checkmark will appear in the button indicating that the video option has been selected. Press the **Save** button to accept the setting. **AUI** returns to the "Central Station" menu screen.

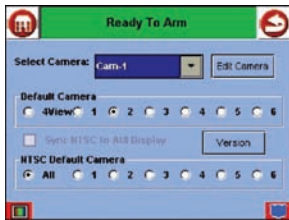




**Touchscreen Interface Viewing**



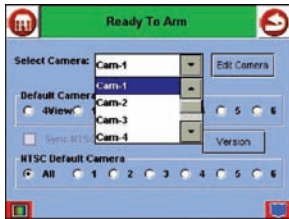
## Touchscreen Interface Viewing



Press the **Video Setup** button.  
The “Video Setup” screen is displayed.

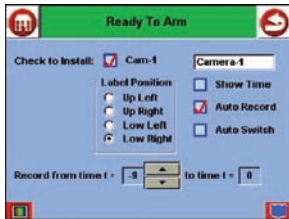
Select NTSC default camera for NTSC composite monitor viewing.

To Edit a Camera select the camera and click the “Edit” tab.



From here, you can set the position of the label and edit the camera’s name. To save the data press the “OK” tab.

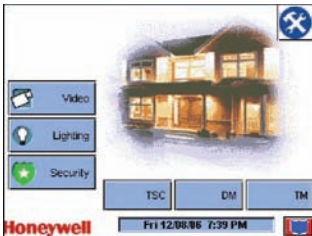
Repeat this for each camera.





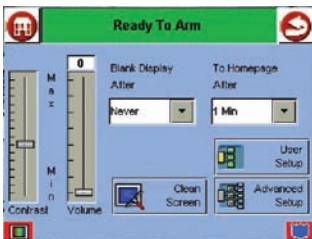
**Touchscreen Interface Viewing**

## Touchscreen Interface Viewing

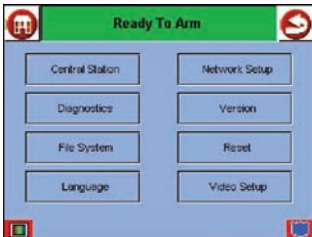


On the AUI “Home” screen, press the **VIDEO** button. The screen displays one of two screens dependent on pre-selected options.

Either a screen showing a single camera view is displayed or the quad view screen is displayed.



When a single camera view screen is displayed, pressing the center of the screen will display the camera select screen. Pressing the AUI screen in any area except the center displays the “Video Selection” screen.



On the Video Selection screen, press the button that corresponds to the camera number (Camera-1, Camera-2, Camera-3, Camera-4, Camera-5, or Camera-6) to display that camera’s view. To display Camera-1 through Camera-4 views at one time, press the 4-Cam View button. To exit Video press either the “Home” or “Back” button.





## Secure Remote Look-in

Honeywell's Optiflex Video services allow you to be securely connected to your Optiflex video system from any computer with Internet access. You can stay in touch by viewing cameras in your home or business. Your secure remote viewing is protected with the highest level of data security. Honeywell's Optiflex Video services deliver the protection you need and the peace of mind you deserve.

## Secure Remote Look-in Setup

Go to the Optiflex Website:

<http://symphony.alarmnet.com/Video/OptiflexDirect.aspx>

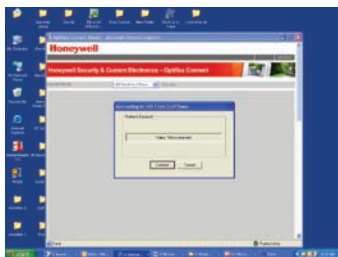
Note: Optiflex must be added as a device via the central station web site prior to web access.



Log on with your account number, provided by the central station:

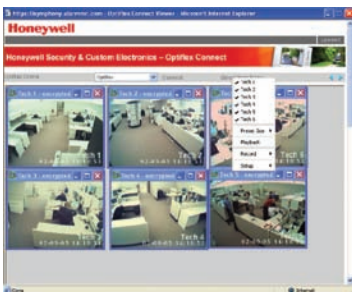
After logging in, press connect and it will attempt to contact the Optiflex device.

After you get connected it will open up all the cameras that are operating on the Optiflex. Next, click on the "Select from Menu".



From the Menu you have the same options that you have from Optiflex Direct software. You edit camera names, playback video clips and set recording options.

ActiveX Note: If you receive this Note you will need to change your Internet Security Settings. See Documentation.





## Optiflex Mobile

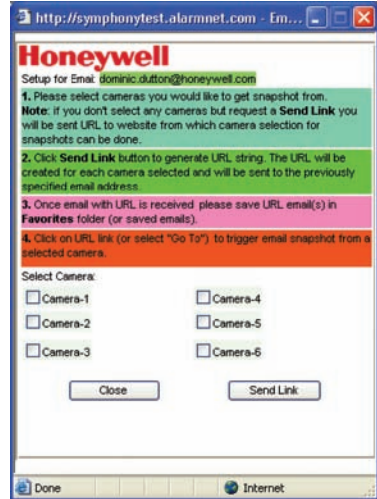
Introducing Optiflex Mobile which delivers images to a cell phone, PDA, laptop, or Desktop.\* Your Optiflex can send images to you based on flexible triggering options such as the opening of a door in your home or business, as well as many other possibilities. With Optiflex Mobile you can also login to your Optiflex and select a camera to view. Stay connected with Optiflex Mobile.

\*Cell Phone or PDA Device must be capable of receiving MMS messages.  
Contact your Wireless provider or See your instruction manual regarding this service.



## Optiflex Mobile

To activate the Optiflex Mobile feature you must first login to your Optiflex Video Controller and then click “E-mail” located in the upper right corner of the web page.



Once the page has opened, enter the e-mail address that you want the mobile link sent to.

Then click on the mobile link tab located on the right side of the page.

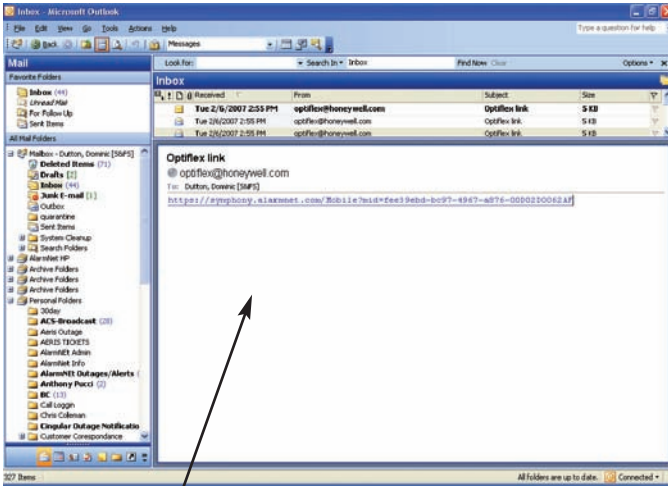
A dialog box will appear in this box you will select the cameras you want Snapshots from.

After you have selected the cameras you want, click the “Send Link” tab. A URL link will be sent to the e-mail address that you have selected. This link must be saved to your mobile device. This will allow you to trigger your Optiflex Controller to send a current view of the cameras you selected.



**Optiflex Mobile**

## Optiflex Mobile



<https://symphony.alarmnet.com/Mobile?mid=fee39ebd-bc97-4967-a876-00D02D0062AF>

Above is an example of the mobile link that you will receive. This link should be saved to your mobile device.



## Video Capture and Archiving

Optiflex can perform video capturing based on events in your home or business. Optiflex will store ten second clips with adjustable pre and post event frames. Video capture may be triggered by a motion detector, door opening or virtually any monitored event. Video capturing is combined with archiving video storage to provide the convenience of viewing only the video clips that have been designated, rather than searching through continuously recorded video.

## Video capture and archiving setup

### To Start Video Capture:

By clicking on a camera on the record menu it will trigger the OptiFlex to store that camera in flash memory.

Records 1 image per second for 10 seconds.

The setting under video setup selects which 10 seconds it records.

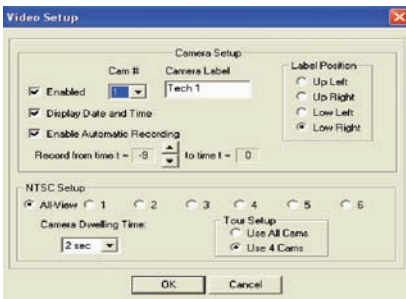
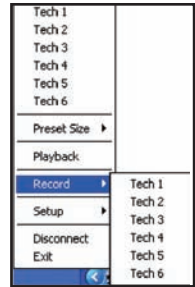
If set for -9 to 0 it will record the 10 seconds leading up to the trigger activation.

This is the same no matter how the unit is tripped. Software Menu Hardware Trigger input 4204 command. Play back when the unit is triggered and it will add the Clip to the Remote list.

### To Play Back a Clip:

Select the clip by clicking on it and then press the Play button.

Optiflex can store up to 19 clips in flash memory. Offsite archiving via AlarmNet allows storage of up to 100 total video clips. Archiving provides seamless retrieval and viewing by the end-user.







Customer Service  
**800-573-0154**

---

Sales Support  
**800-467-5875**

---

Technical Support  
& Design Applications  
**800-645-7492**

**Honeywell Security & Communications**

Honeywell

2 Corporate Center Dr. Suite 100

Melville, NY 11747

Tel: 800.467.5875

[www.honeywell.com](http://www.honeywell.com)

**Honeywell**

L/OFLXAPGB/D

June 2008

© 2008 Honeywell International Inc.